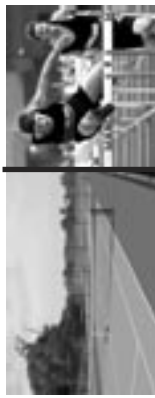


# Court & Track

A Construction Newsletter, Published by the Tennis & Track Division of Munson Inc.



## Tennis & Track Div. expands service offerings; Partners with Matéflex to meet expanding customer needs



With Matéflex products, Munson Inc. can help you to build any court application, outdoors or indoors.

Modular sport surfaces are constructed with interlocking synthetic modular tile systems suspended over concrete, bituminous, or wood substrates. Made of high-impact polypropylene, Matéflex sport surface tiles are cushioned, highly-durable, fungus-and-mildew resistant, and need minimal maintenance. Outdoor systems dry quickly after rainfalls and provide low glare. Indoor systems can be constructed with optional 3mm underlayment for added cushion. Both indoor and outdoor systems come with 10-year, limited warranties.

According to the National Association of Realtors, for home buyers seeking luxury homes (valued at \$1 million or more), backyard recreation courts (including full-size tennis courts) rank fourth in most-desired luxury amenities, trailing only wine cellars, media rooms with stadium seating, and designer kitchens.

For more information about Matéflex sport surfaces, call Fred Kolkmann at 414.351.0800 or visit [www.mateflex.com](http://www.mateflex.com).

### Matéflex: Court restoration solution

In addition to providing premium sport surfaces in new construction applications, Matéflex interlocking synthetic modular tiles are ideal for high-quality, outdoor tennis court restoration projects, providing the comfort and resilience of a soft court with the durability and low maintenance of a hard court.



Matéflex tennis court surfaces incorporate a unique leaf-spring-type flex joint system, which provides lateral give during play to reduce leg stress and fatigue and minimize injury. The system is made from a specially-formulated, all-weather-blended polypropylene material and is engineered for quick drainage, high traction, good ball bite, low glare, long service life, and accurate playing line dimensions that do not vary due to changes in temperature.

Base problems must be repaired prior to tile installation. Wide cracks, cracks exhibiting vertical shifts, and substrata birdbaths must be filled, leveled, and repaired prior to installation. To determine what surface restoration solution is right for your tennis court(s), call Fred Kolkmann at 414.351.0800.

The Tennis and Track Division of Munson Inc., in partnership with Matéflex Modular Surfaces, is proud to announce the expansion of its construction service offerings to include the design and installation of indoor and outdoor modular sport floor applications, including surfaces for aerobics, basketball, dance, inline hockey, multipurpose gyms, multi-sport backyard recreation, tennis, volleyball, and weight training.

“Matéflex created the original modular sports surface and continues to lead the field in modular surfacing technology,” says Fred Kolkmann, Manager of Munson’s Tennis and Track Division. “We are proud to be affiliated with them and excited about working with area architects, builders, developers, and landscape professionals to provide value-added athletic venues for schools, churches, municipalities, dance studios, community centers, parks, condo associations, health and fitness centers, and private clubs and residences. The skills we perfected building tennis courts and running tracks transfer well to constructing modular court systems.”

### A Milwaukee Tradition Since 1955

Munson Inc. will celebrate its 50th Anniversary this fall with an Open House at its operations in Milwaukee. Monitor the mail for your invitation.



A full-service asphalt, concrete, and fencing contractor, Munson’s business model has held up well since 1955: Educate customers, furnish up-front pricing, and provide for outstanding quality in materials, installation, and service.

Plan now to celebrate 50 years of project innovation, culture, values, leadership and constructive accomplishments, as Munson Inc. sets the stage for future successes.

July, 2005

Munson Inc. is a proud and active member of the following associations:



# CASE STUDY: Planning, creativity, and teamwork hold court in Wisconsin's pristine Northwoods

Bud Collins is fond of saying: "No athletic venue is like Wimbledon." Steeped in tradition, all eyes focus on Centre Court at the All England Club, watching as tennis greats write new chapters into the tournament's rich history.



*Providing luxury amenities in pristine environments requires a delicate balance*

A history far older, and vacation expectations and traditions spanning generations, confronted the Tennis and Track Division of Munson Inc. in the spring of 2004, in the heart of Wisconsin's Northwoods Lake Country. The challenges: (1) Construct a high-quality, easy-to-maintain, multi-use, athletic court facility for a luxury resort, without dominating views in one of the world's highest concentrations of pristine forest and inland freshwater lakes; (2) Engage the weather, the needs of springtime guests, and a tight construction schedule to put the court in service by June 2<sup>nd</sup>.

Located on a majestic landing once home to the Chippewa Indians, Chippewa Retreat Lodge and Resort (see [www.chippewaretreat.com](http://www.chippewaretreat.com)) successfully provides the finest the area has to offer in lodging and high-end amenities, while maintaining the traditional ambiance associated with northern Wisconsin retreats. As resort owner John McGraw puts it: "Guests vacation here for the breathtaking seclusion, forests filled with wild life, world-class fishing, and the spectacular sunsets over Lake Manitowish. But they also desire world-class accommodations, including pools, fitness centers, play areas, and outdoor recreation courts."

Paving paradise to provide outdoor resort venues for basketball, volleyball, and tennis was not an option. An extensive January planning meeting between the owner, architect Richard Fisher, and general contractor Munson Inc. produced an acceptable solution: Instead of sacrificing timber stands and resort ambiance, convert a portion of an existing gravel parking lot into an open-air, multi-sport athletic venue. By lowering site elevations and incorporating innovative fencing and landscaping solutions, Munson Inc., and its construction team partners, was able to minimize the environmental and visual impacts of introducing a multi-sport, outdoor asphalt recreation court into the natural environment.

To help "hide" the court, site elevations were lowered and an owner-designed masonry wall, clad with a cultured "fieldstone" veneer, was built around the court perimeter. Wall caps were cast to accommodate forest green, low-profile fencing elements. Proper drainage was accomplished through court slope and the construction of four 6-inch by 12-inch soughs (outlets) through the wall at the low end of the court.

Adherence to American Sport Builders Association construction guidelines, including providing a control joint along the net line, served up an attractive, low-maintenance court able to stand the test of time.

"The project came in on time, on budget, and met its objectives" said Fred Kolkmann, Manager of Munson Inc.'s Tennis and Track Division. "No Northwoods athletic venue is like it."

## Tennis court seminar provides useful instruction

More than 70 area tennis court administrators and maintenance professionals attended the 5<sup>th</sup> Annual Munson Inc. Tennis Court Seminar April 5<sup>th</sup> in Milwaukee, receiving useful instruction in, and excellent resources on, how to construct, maintain, and reconstruct tennis courts successfully.

Leading tennis court construction professionals brought their A-games to the program, sharing relevant information and flawlessly volleying answers to questions from seminar participants. Their presentations were designed to help seminar participants save hundreds-to-thousands of dollars in construction and maintenance costs.

Speakers included: Roger Pocta, Larsen Engineering; Rick Burke, Novagrass International; Larry Tegtmeyer, California Products; Randy Futty, Lee Tennis; Carl Peterson, J.A. Cissel; Tim Stulz, Master Halco; Fred Jones, Matéflex Modular Surfaces; and Larry Jones and Fred Kolkmann of Munson Inc.

# Q and A

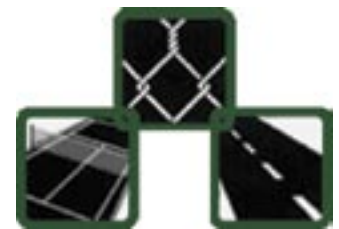
*Do control joints on asphalt courts really work, and to what depth/spacing should they be*

Taking a page from the concrete industry, court builders install control joints between courts and along the net lines. These joints help to reduce the size of any one piece of court pavement, have movement where it affects play least, provide a place for cracks to stop, and help eliminate the cracking associated with net post movement.

We have used this method on several hundred courts and found it does reduce the amount of cracking, but will not eliminate all cracking. On some courts we have seen the joints open to 3-inches wide, indicating the joints are absorbing pavement stresses.

Regarding joint depth ... some cut only partially through the surface course; some cut only through the top layer of asphalt; some prefer cutting all the way through the pavement. Through experience, we have found all systems work well, as long as the pavement has a weakened joint.

*Have questions about court or track construction/maintenance issues? Contact Munson, Inc. phone: (414) 351.0800 fax: (414) 351.0879 email: fred@munsoninc.com*



**MUNSON INC.**

**QUALITY & SERVICE  
SINCE 1955**

Fence • Asphalt • Concrete